

# Puzzle Ring



## EMPORIUM

### 8-Band Instructions for 81N, 8N, 8NX, 8T, 8TW4, 8WA, 8TWB



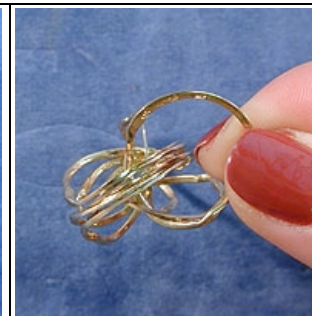
1. Hold Band stamped "1" (rounded outside band) with the irregular portion up and in your left hand.



2. Bring Band stamped "2" (Other outside band) up against "1" band forming a diamond shape. Note - these are the outside bands when the ring is assembled.



3. Bring two more bands up on each side ("6", and "8" one side and "5" and "7" on the other). They should rest comfortably next to "1" and "2".



4. Grasp band stamped "4" in your right hand with the stamp facing towards you, allowing remaining six bands (1,2,5,6, 7,8) to fall to one side.



5. Take the single band hanging on the bottom, stamped "3" and bring it up towards you with your left hand until the two bands are parallel.



6. Holding the "3" band between your thumb and forefinger, turn the band clockwise.



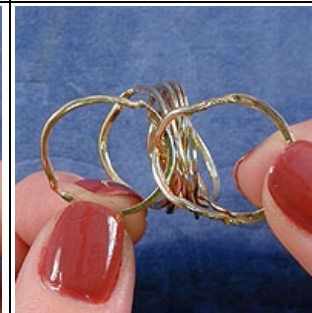
7. Continue turning until you have completed a 180-degree rotation.



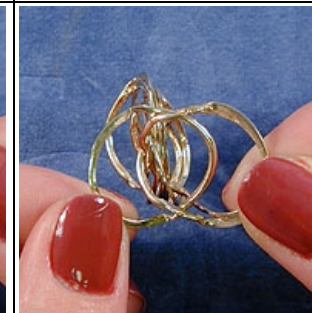
8. The two bands should fit together locking in the 6 remaining bands. (1,2,5,6,7, and 8).



9. When you have completed the last step, if you turn the ring right side up the "3" and "4" bands should create an X.



10. Take the first band on the same side as "3" which is "8" and rotate the band until the irregular shaped part is on the inside of the ring.



11. Be sure that the "v" shaped part is over the remaining loose bands.














12. Bring band up against "3" band.

# Puzzle Ring



## EMPORIUM

### 8-Band Instructions for 81N, 8N, 8NX, 8T, 8TW4, 8WA, 8TWB (Cont.)

					
<p>13. Turn ring around and start rotating "7" band until the irregular shaped part is on the inside of the ring.</p>	<p>14. Be sure that the "v" shaped part is over the remaining loose bands. Bring band up next to assembled bands.</p>	<p>15. Turn ring around and start rotating "6" band " until the irregular shaped part is on the inside of the ring.</p>	<p>16. Be sure that the "v" shaped part is over the remaining loose bands. Bring band up next to assembled bands.</p>	<p>17. Turn ring around and start rotating "5" band " until the irregular shaped part is on the inside of the ring.</p>	<p>18. Be sure that the "v" shaped part is over the remaining loose bands. Bring band up next to assembled bands.</p>
					
<p>19. Turn ring around and start rotating "2" band " until the irregular shaped part is on the inside of the ring.</p>	<p>20. When you have completed the rotation, be sure that the "v" is over the remaining band, "1". Leave this band loose, as the tight weave requires you to complete the next steps before it will fit into place.</p>	<p>21. Turn ring around and start rotating "1" band (reaming band) until the irregular shaped part is on the inside of the ring. Be sure that the v shaped part is under band "2".</p>	<p>22. The last two bands should fall into place. If you are having problems, be sure that you have the band with the "v" part of "2" and "1" in the correct order.</p>	<p>23. Congratulations, you have assembled your ring.</p>	